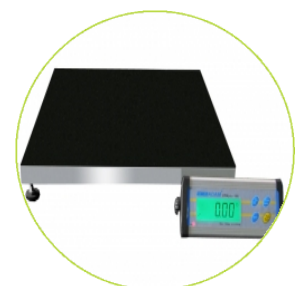
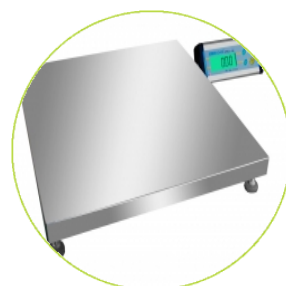
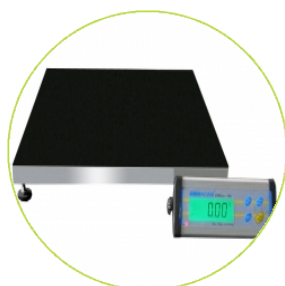
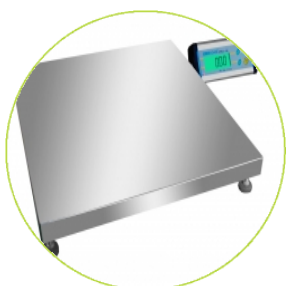




Speed, Performance, Value - Perfect Balance

- Colour coded keys
- External calibration
- Four load cell construction
- Full range tare
- Kg/ lb/ oz/ lb & oz switchable
- Hold function
- Large backlit LCD display
- Mains adapter and wall mounting kit supplied as standard
- RS-232 bi-directional interface
- Stainless steel weighing pan with remote indicator
- Simple 4 button operation
- Tare function
- Rechargeable battery / mains adapter supplied as standard
- Animal / dynamic weighing
- Weighing



Technical Specifications

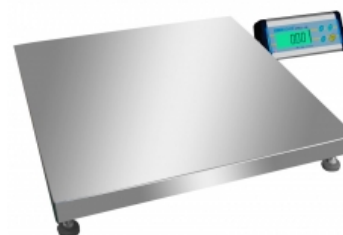
Model	CPWplus 35M	CPWplus 75M	CPWplus 150M	CPWplus 200M
Maximum capacity	75lb/35kg	165lb/75kg	330lb/150kg	440lb/200kg
Readability	0.02lb/10g	0.05lb/20g	0.1lb/50g	0.1lb/50g
Tare range	Full	Full	Full	Full
Repeatability (S.D.)	10g	20g	50g	50g
Linearity (\pm)	20g	40g	100g	100g
Platform size	19.7x19.7" / 500x500mm			
Net weight	18.7lb	-		18.7lb

General Specifications

Units of measurement	Kilogram (kg), Pound (lb), Ounce (Oz), Pound-Ounce (lb-oz)
Typical stabilisation time	2-3 Sec
Interface	RS-232 bi-directional Interface
Calibration	Automatic External with user selectable calibration mass
Display	LCD with minimum 25mm digits with weight legends for kg, lb, oz and low battery, stable, zero, net weight and hold symbols, as well as ability to display lb and oz together
Operating temperature	32°F - 104°F
Housing	Indicator- Aluminium, Platform- Mild Steel base and stainless steel platform
Overall dimensions (wxdxh)	19.7x19.7x1.6" / 500x500x40mm
Dimensions notes	Indicator: 220 x 95 x 43mm (w x d x h)

Key Accessories

- Adam Printer
- AdamDU - Data Collection Program
- USB to RS-232 Interface Cable
- Thermal Paper for Adam Printer (5 Pack)
- RS-232 Cable



Adam Equipment - offices worldwide

www.adamequipment.com